



NRC 

40/50 SR

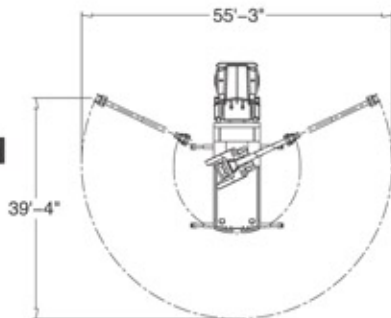
**REALIZE
YOUR CAPACITY**

40/50 SR INCIDENT MANAGER

Designed to handle the toughest recoveries and heavy towing, the 40/50SR with its compact size, is the best in maneuverability and versatility. The NRC "Compact Incident Manager" with its rotating boom and unique sliding system, will bring you the best "USABLE BOOM CAPACITY".

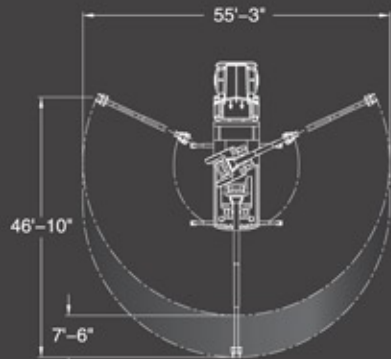


UNDERSTANDING THE SLIDING SYSTEM



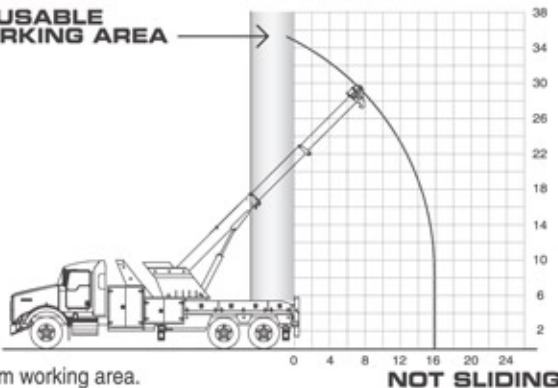
Increase your working area.

NOT SLIDING



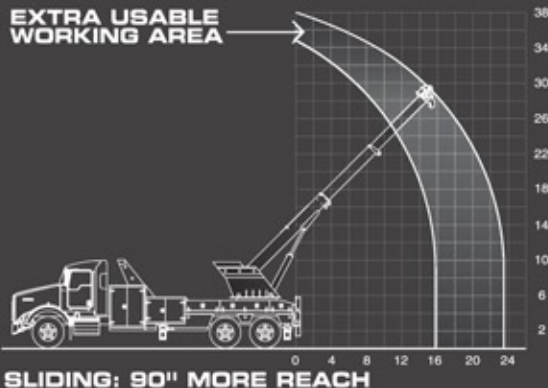
SLIDING: 24% MORE WORKING AREA

UNUSABLE WORKING AREA

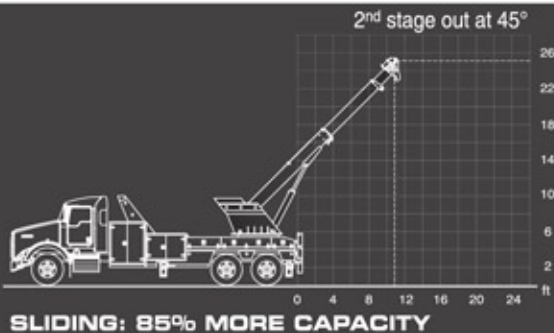


Don't lose your maximum boom lifting capacity in an unusable boom working area.

EXTRA USABLE WORKING AREA



Increase your lifting capacity by working with only the 2nd stage out at 45° instead of the 3rd stage out at 33°.



TOP 7 ADVANTAGES



1- SLIDING SYSTEM

- Double your lifting capacity by working with the boom in a more retracted position.
- Increase your reach by 90" (greater working area).
- Save time by not having to extend the boom or adjust the wire rope height when it is time to take the load from one side to the rear.
- Greater working area.
- The Slider technology gives you more options when attacking a new challenge. You can always position the boom at the best possible angle and location, which can vary depending on the situation.

2- LOW-PROFILE OUTRIGGERS

- Better maneuverability by being able to lift the load over them, thus reducing the overhang.
- Get maximum strength when the load is at the corner.
- Offers recovery anchors for side-pulling.
- Gives you the best stability for winching.

3- REMOVABLE UNDERLIFT

- Lighter than an independant Underlift.
- Get closer to the tailboard for extreme recoveries.
- Removable in seconds.

4- BEST TECHNOLOGY

- V Boom
- NRC Tag axle (option)
- Auxiliary winches under the boom to get full control of the load.

5- USABLE BOOM CAPACITY

- Does boom size matter? Yes. However, this is only one of several factors that will determine the Usable Boom Capacity and therefore the real capacity of your equipment. At NRC, we talk about Usable Boom Capacity, not boom size which is meaningless when considered alone.
- "V" boom & best boom elevation range.
- Work with the boom retracted to achieve the greatest capability during a lift.
- Get your boom closer to the load with our sliding system and low-profile outriggers (a shorter radius always helps).

6- SAFETY

- Work more safely with a higher level of performance.
- The ratings are based on actual live tests. We actually picked up the heaviest load possible, **50 Ton**, without overloading the equipment. We then deducted 25% to achieve a safe load rating.
- Self-leveling and anti-twist systems.

7- CUSTOM-MADE DESIGN

- At NRC, you are not just a number, you are unique and so is your equipment. Every piece of equipment is custom-made especially for you, according to your recommendations and with the numerous options that only NRC can offer you. You are not lost in the crowd; you have equipment that is custom-built for you and adapted to your needs.

4 MYTHS

1- CAN'T SLIDE WITH HEAVY LOADS... FALSE

Moving heavy loads back & forth was our main goal when we designed the sliding system. This has been one of our engineering team's great successes and we are always proud to show everybody at tow shows, at the customer's location or right here at our plant, just how powerful it really is.

2- DIFFICULT TO USE REMOVABLE UNDERLIFT... FALSE

It works exactly like an independent or integrated underlift for towing. However, its main advantage is that you can remove it and get the load closer to the tailboard for extreme recoveries. In a few seconds, you get the best of both worlds.

3- CAN'T WORK WITH THE BOOM AT 0° ANGLE BECAUSE IT WILL INTERFERE WITH THE UNDERLIFT... FALSE

The underlift is easily removable!

4- HAVING THE AUXILIARY WINCHES UNDER THE BOOM IS NOT THE BEST LOCATION... FALSE

Don't forget, we were the first company to introduce them on the market. Therefore, we had the privilege of choosing the best location. You will enjoy not having to adjust the wire rope height when changing the boom angle.



STANDARD BOOM FEATURES

- 2 stage boom
- "V" shaped boom
- Maximum lifting capacity retracted: 100,000 lbs
- Safe lifting capacity retracted (25% security factor): 80,000 lbs
- Maximum lifting capacity extended: 30,000 lbs
- Boom elevation operating range: 0-65°
- Maximum hook height (2 stage boom): 28'
- Reach past tailboard at minimum boom angle (2 stage boom): 15'11"
- 90° sliding boom; Locks on sliding system
- Nylatron boom slide pads
- Dual 35,000 lb planetary winches
- Wire rope: 3/4" x 200'
- Air cable tensioners
- Air free spool
- Air actuated slew locks
- 360° sheave heads
- D-rings mounted on each boom section
- Holding valves for boom elevation & extension

STANDARD BODY FEATURES

- 99" wide body
- 168" minimum CA (from back of cab to center of rearmost axle)
- Anti-twist device
- Self-leveling
- Hydraulic front & rear outriggers, with a 48" extension each (195" spread)
- Recovery anchors on rear outriggers
- Recovery anchors on each outrigger for side-pulling
- Forward compartments
- Compartments over the wheel well
- Door checks
- Control station lighting
- Attachment holders
- Tailboard mounted D-rings
- Federal standard 108 lighting
- Holding valves on hydraulic jack legs
- Lubrication fittings on all moving parts
- Shotblast & Epoxy primer paint
- Hydraulic pump
- Hydraulic pressure gauges (driver side)
- Mud flaps

OPTIONAL EQUIPMENT

- 2 Auxiliary 15,000 lb winches mounted under the boom
- 3 stage boom
- 3 stage Underlift (HD or SHD)
- 4 stage Underlift (HD or SHD)
- Additional attachments
- Heavy duty tire lift
- Tunnel tool box (24" to 72")
- Battery box inside the tunnel tool box
- Light pylon
- Winch covers
- Rear work lights
- Stainless dress-up kit
- Aluminum dress-up kit
- Chain package
- Recovery straps
- Snatch blocks
- Light bar
- Paint
- Installation



STANDARD UNDERLIFT FEATURES

- Removable
- Power elevation (using boom)
- Power extension
- Power tilt (using boom)
- Power fold
- Safety chains c/w pockets
- Tie-down chains



HD-3

- Capacity retracted: 35,000 lbs
- Capacity extended: 15,000 lbs
- Minimum reach: 73"
- Maximum reach: 111"

SHD-3

- Capacity retracted: 50,000 lbs
- Capacity extended: 20,000 lbs
- Minimum reach: 86"
- Maximum reach: 136"

SSHD-4

- Capacity retracted: 60,000 lbs
- Capacity extended: 23,000 lbs
- Minimum reach: 76"
- Maximum reach: 150"

LSHD-4

- Capacity retracted: 60,000 lbs
- Capacity extended: 20,000 lbs
- Minimum reach: 87"
- Maximum reach: 176"

Note: All ratings are based on structural factors only
All measurements are from the back of tailboard to the end of the T-bar

RECOMMENDED MINIMUM CHASSIS SPECIFICATIONS*

- Front Axle: 20,000 lbs
- Rear Axle: 46,000 lbs
- RBM: 4,500,000 in.lbs
- C.A. available: from 168" (from cab to center of rearmost axle)
- Double frame (11-5/8" x 3/8" thick and full insert 3/8" thick)
Call NRC for more information

* All recommendations are minimums; heavier specifications may be required depending on chassis and equipment weight. Always consult your local distributor or the factory for additional information.

All ratings are based on structural factors only, not vehicle capacities. Specifications shown are approximations and may vary depending on chassis selected. NRC Industries Inc. reserves the right to change or modify the product and/or specifications without notice or obligation. Some optional equipment shown.

The outside frame rails of chassis extending behind the cab must be free of fuel tanks, air tanks, battery boxes, etc.

